

IN THE UNLIKELY EVENT OF YOUR TENT DEVELOPING A LEAK

- 2.** Firstly check all valves are screwed in correctly.
- 3.** Deflate the faulty **AERO-FRAME** and unzip the flysheet sleeve.
- 4.** Remove the tube from the Outer by cutting the cable tie holding the zipper ends together and unzip.
- CAUTION: DO NOT OPEN THESE ZIPS WHEN THE POLE IS INFLATED.**
- 5.** Remove the clear tube from the sleeve.
- 6.** Partially inflate the tube and check for leaks (bubbles) in a basin of water.
- 7.** Using the repair patch provided cover the hole and seal.
- 8.** Partially inflate the tube and re insert into the pole sleeve. Zip together.
- 9.** Connect the zipper ends with the replacement Cable ties provided.



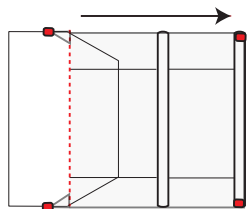
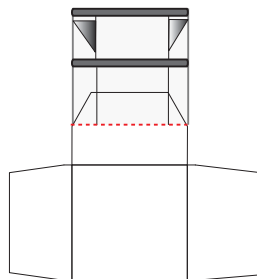
Zempire is proud to be a 100% New Zealand owned and operated business.

For more information about this and other great products we offer please visit our website.

PITCHING INSTRUCTIONS – AEROCanopy

1. Clear your site in front of your tent making sure there are no sharp objects where you are going to pitch your tent. Spread awning out, the PVC windows are located on at the front.

2. Attach the awning connection the zip found at the open end of the awning with the zip found above the awning pole of the tent.



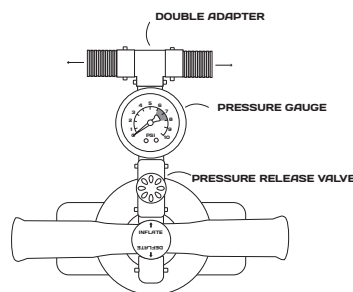
3. With the door closed, extend out the awning and peg down each side of the front door. Ensure that the awning sits square.

4. Peg out the tension fins at the base of each wall closest to the tent. Fins should sit on the outside of the tent awning.

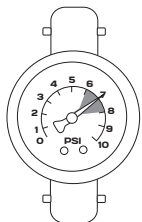
5. Open the zip ports and remove the valves completely and re-screw in to ensure the valve is not cross-threaded. Screw in firmly but do not over tighten. Open the valve caps.

6. The Pump features a double hose adapter which allows two tubes to be inflated at the same time.

Ensure the pump is configured as per the following diagram.



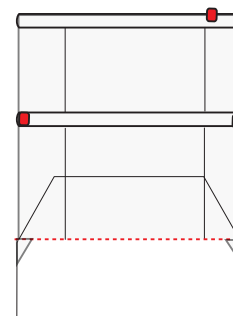
Attach the of the hoses to the **AERO-FRAME** valve inlets.



7. Begin to inflate the **AERO-FRAME**. Have someone walk inside to help raise the frame during inflation. Inflate to 7 PSI.

DO NOT INFLATE ABOVE 8PSI. THIS MAY CAUSE DAMAGE TO THE POLES AND THE TENT.

8. Once inflated to the correct pressure, remove the pump hoses and securely attach the valve caps. Close the Valve Cover.



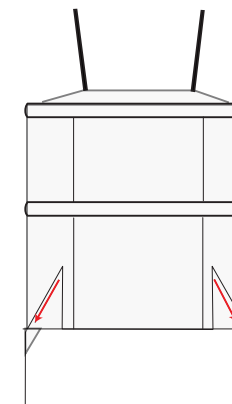
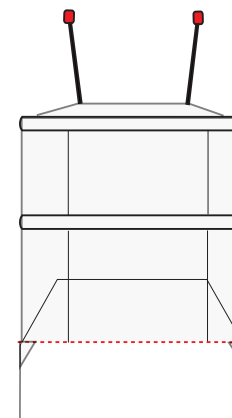
9. Peg out the remaining peg points around the awning. It is easier to align the front door correctly with the door closed.

10. Peg out the front anchor webbings. These should sit at a 45° angle to the ground.

11. Elastic loops and toggles allow the tent vestibule sides to be rolled away.

12. It is recommended that guy ropes are pegged out at all times and windows are opened whenever possible to allow adequate ventilation.

Insert pegs at a 45° angle



DEFLATION

1. Remove the valves from the **AERO-FRAME**. Take care as poles will be under pressure.

2. It may be necessary to remove some excess air from the **AERO-FRAME** before rolling up your tent. This can be done by carefully walking down the length of the tube towards the valve end.